



Ryder FleetCARE

Your Fleet Information.
Online. Anytime.

TECHNOLOGY BASED SOLUTIONS FOR
OPTIMAL FLEET MANAGEMENT.

For more than 75 years, Ryder has been committed to providing customers with innovative transportation solutions.

Ryder FleetCARE is one of many technology based tools offered by Ryder to ensure that our customers have quality information to support existing needs and future growth.

Providing business-critical information regarding fleet operations, benefit from FleetCARE by actively using the available information for operational improvements and cost reductions. Access reports detailing:

- ▶ Maintenance Indicators
- ▶ Maintenance Scheduling
- ▶ Fuel Purchases
- ▶ Vehicle Rental Activity
- ▶ Service Calls
- ▶ Actual vs. Rated Miles
- ▶ Vehicle Specifications

Through the use of leading edge Business Intelligence software, Ryder FleetCARE provides information that is immediately useful to the viewer. FleetCARE's most important features are its report and interactive summary dashboards. Whether it's knowing your fleet's historical fuel costs, vehicles running more than their rated miles, or number of license plates expiring in the next month, Ryder FleetCARE has the answer.

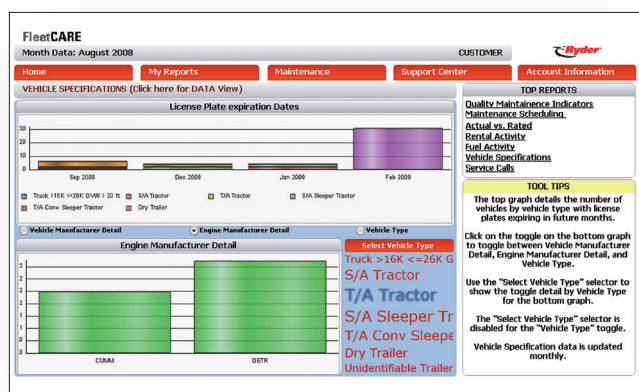
For information about
Ryder FleetCARE, call:
1-800-RYDER-OK
(1-800-793-3765)

The Ryder FleetCARE Landing Page provides customers with a quick, high level overview of actionable fleet metrics.

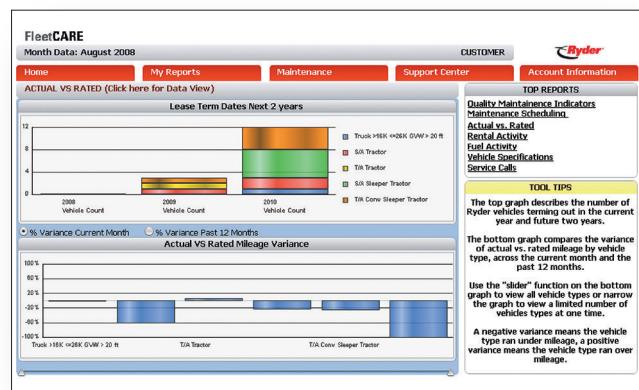
Or, visit us today at www.Ryder.com



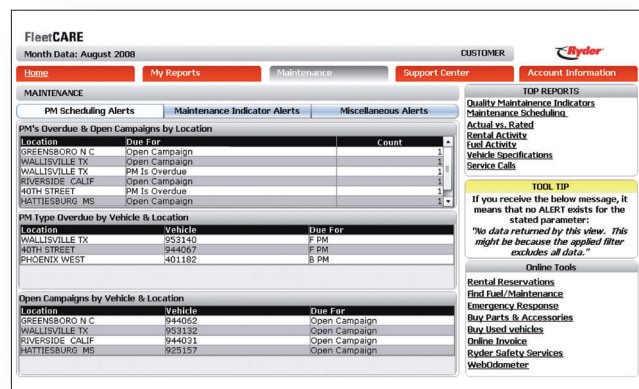
Each Ryder FleetCARE report includes interactive summary dashboards highlighting important fleet metrics, as well as data reports with full functionality: by vehicle and location sorting, date prompts, and dropdown menus.



Vehicle Specification Chart View detailing License Plate detail, Vehicle Manufacturer Detail, Engine Manufacturer Detail, and Vehicle Type.



Actual vs. Rated Mileage Report detailing Lease Term dates and Fleet Mileage variances.



Maintenance Alerts dashboard detailing actionable indicators such as overdue Preventative Maintenance visits, Service Call activity, and long-term Open Rentals.

View the following reports in your company's Ryder FleetCARE account:

- ▶ **Quality Maintenance Indicators:** Provides a high level snapshot of key maintenance metrics. With timely Preventative Maintenance as the cornerstone of any fleet's success, the "QMI" report summarizes Preventative Maintenance currency, repair activity, substitute vehicle usage, and service call downtime hours.
- ▶ **Maintenance Scheduling:** Used for the scheduling of preventative maintenance needs by vehicle, the Maintenance Scheduling report provides location-specific actionable information.
- ▶ **Fuel Purchases:** Fuel costs are one of the most expensive but necessary costs involved in any transportation process. Use the Fuel Purchase report to better understand the impact on your operation and keep a running log of fueling costs for operational planning and financial budgeting.
- ▶ **Vehicle Rental Activity:** This daily report allows for the analysis of vehicle rentals by location, type, and date. Keep an eye on both active and closed rentals – costing and miles run – to help determine when and how your fleet should grow.
- ▶ **Service Calls:** Vehicle uptime is critical to the efficiency of your business. When breakdowns occur, you need to know why, and for how long. The Service Call report describes each breakdown, including summary information on the repair activity and associated downtime hours.
- ▶ **Actual vs. Rated Miles:** Preparedness is a key characteristics of any successful business. Help ensure that your vehicles are within the lease's rated miles by using the Actual vs. Rated miles report. View vehicle level information to minimize exposure to potential over mileage charges.

- ▶ **Vehicle Specifications:** When making important fleet decisions, it is imperative to know your fleet's current profile. The Vehicle Specification report serves as an Asset Management register: all pertinent details of each vehicle are included in this report.

For information about
Ryder FleetCARE, call:
1-800-RYDER-OK
(1-800-793-3765)

Or, visit us today at www.Ryder.com